

Replacement Sheet

"A novel jack form LED lamp package and caddy", William W. Truxes III (435-659-9847 / truxes3@parkcityus.com), Application #: 11/299,019



1/2

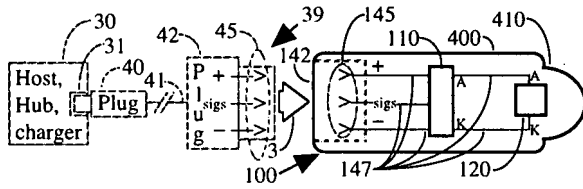


FIG. 1A

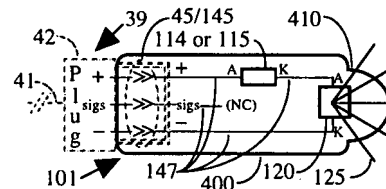


FIG. 1B

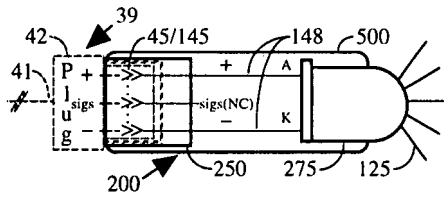


FIG. 2A

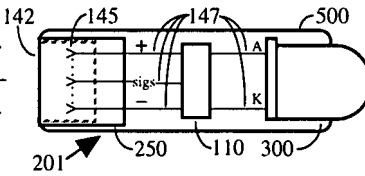


FIG. 2B

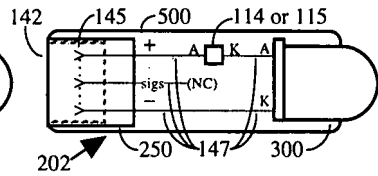


FIG. 2C

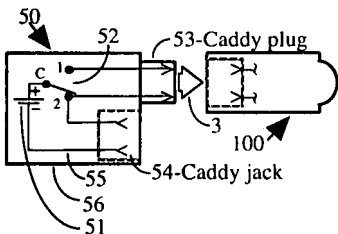


FIG. 3A

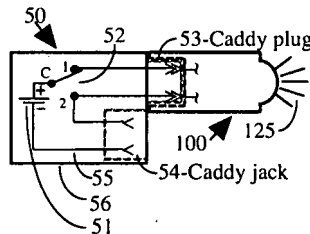


FIG. 3B

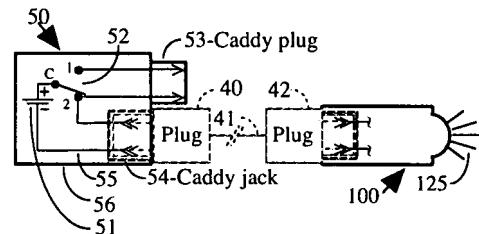
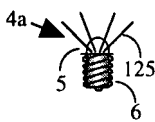
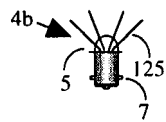


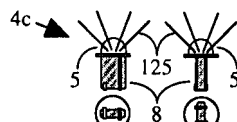
FIG. 3C



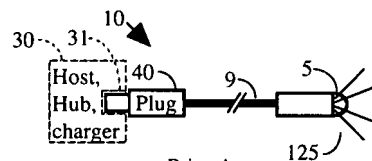
~Prior Art~  
FIG. 4A



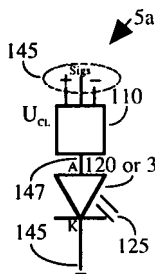
~Prior Art~  
FIG. 4B



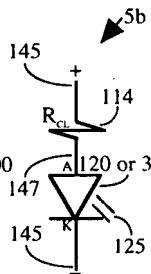
~Prior Art~  
FIG. 4C



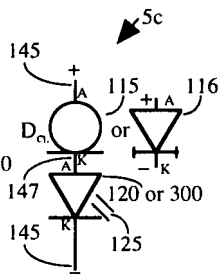
~Prior Art~  
FIG. 4D



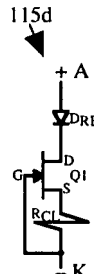
~Prior Art~  
FIG. 5A



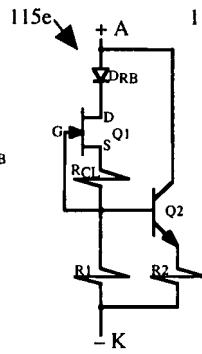
~Prior Art~  
FIG. 5B



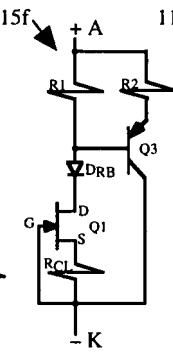
~Prior Art~  
FIG. 5C



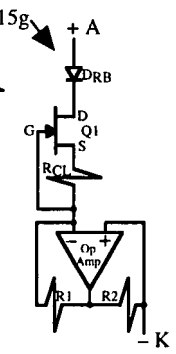
~Prior Art~  
FIG. 5D



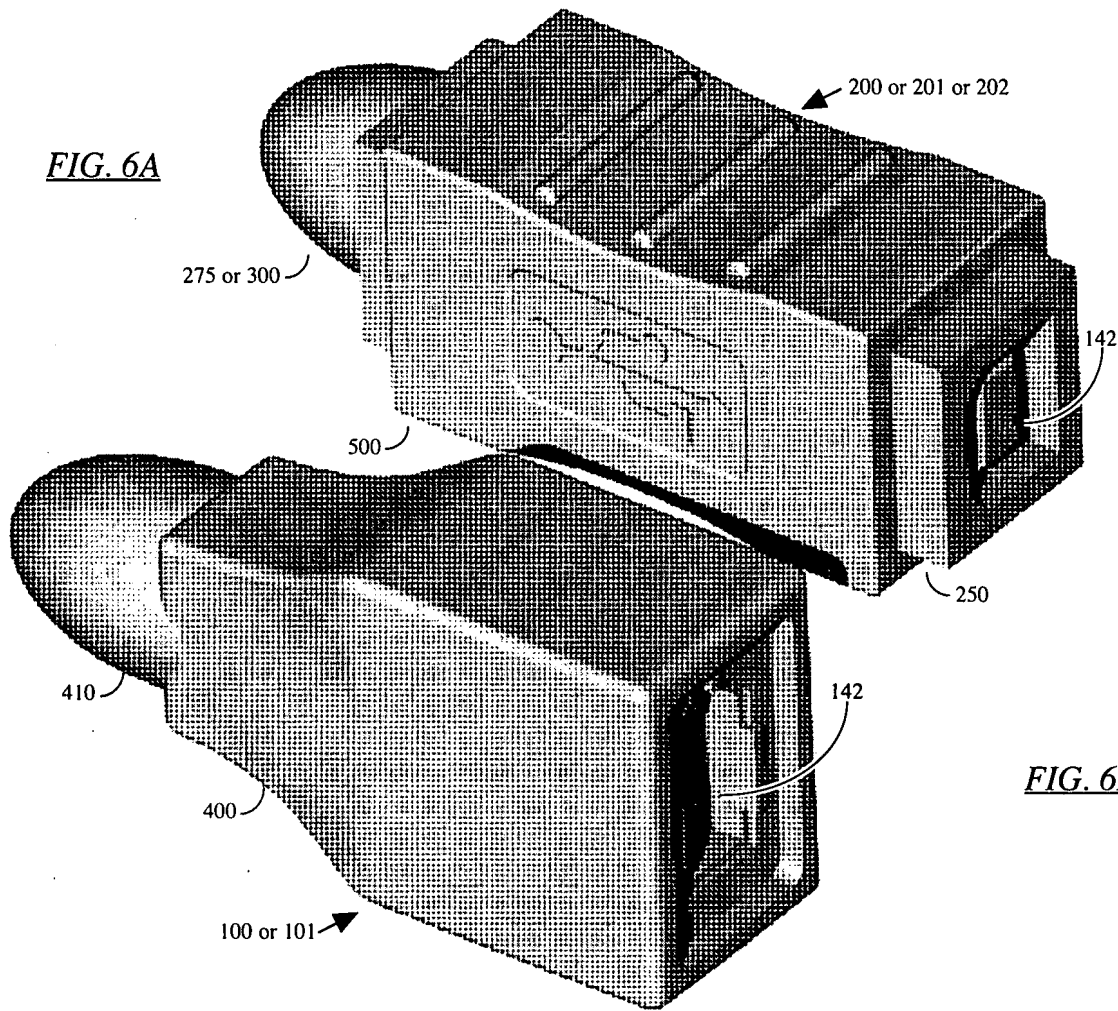
~Prior Art~  
FIG. 5E



~Prior Art~  
FIG. 5F



~Prior Art~  
FIG. 5G



*FIG. 6A*

*FIG. 6B*